



Priory Avenue, Haverhill, CB9 8HQ

CHEFFINS

Priory Avenue

Haverhill,
CB9 8HQ

A well positioned two bedroom bungalow located close to the town centre and recreation ground. The property benefits from shower room, kitchen, lounge, and two good sized bedrooms. Available 18th July 2025.

- Two Bedrooms
- Close to Town Centre
- Shower Room
- EPC Rating D
- Council Tax Band B
- Minimum 6 Month Tenancy



£1,050 PCM





Entrance Hall

Storage cupboard, doors to:

Lounge

Window to rear, window to side, feature electric fire, door to:

Kitchen

Window to front, door to side, fitted wall and base units with worktop over and breakfast bar, electric cooker with extractor over, space for fridge freezer, space for washing machine, sink with mixer tap and drainer



Bedroom 1

Window to rear, fitted sliding door wardrobes



Bedroom 2

Window to front



Shower Room

Window to front, shower cubicle with electric shower, wash hand basin, wc

Lettings Agents Notes

For more information on this property please refer to the Material Information brochure on our Website



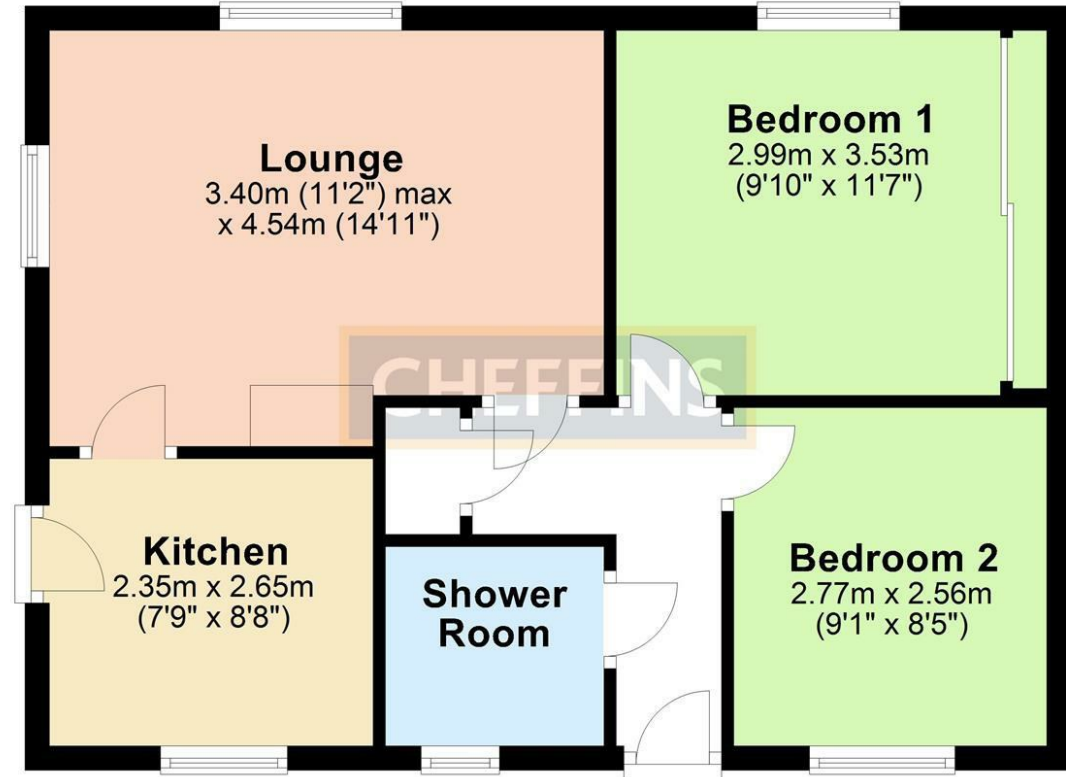
Energy Efficiency Rating		
	Current	Potential
Very energy efficient - lower running costs		
(92 plus) A		84
(81-91) B		
(69-80) C		
(55-68) D	62	
(39-54) E		
(21-38) F		84
(1-20) G		
Not energy efficient - higher running costs		
England & Wales		EU Directive 2002/91/EC

£1,050 PCM

Council Tax Band – B

Local Authority – West Suffolk

Ground Floor



Note: Not to scale - For guidance purposes only
Plan produced using PlanUp.

Agents note:

[For more information on this property please refer to the Material Information Brochure on our website.](#)

Cavendish House, 27a High Street, Haverhill, Suffolk, CB9 8AD | 01440 707076 | cheffins.co.uk

IMPORTANT: we would like to inform prospective purchasers that these sales particulars have been prepared as a general guide only. A detailed survey has not been carried out, nor the services, appliances and fittings tested. Room sizes should not be relied upon for furnishing purposes and are approximate. If floor plans are included, they are for guidance only and illustration purposes only and may not be to scale. If there are any important matters likely to affect your decision to buy, please contact us before viewing the property.



CHEFFINS